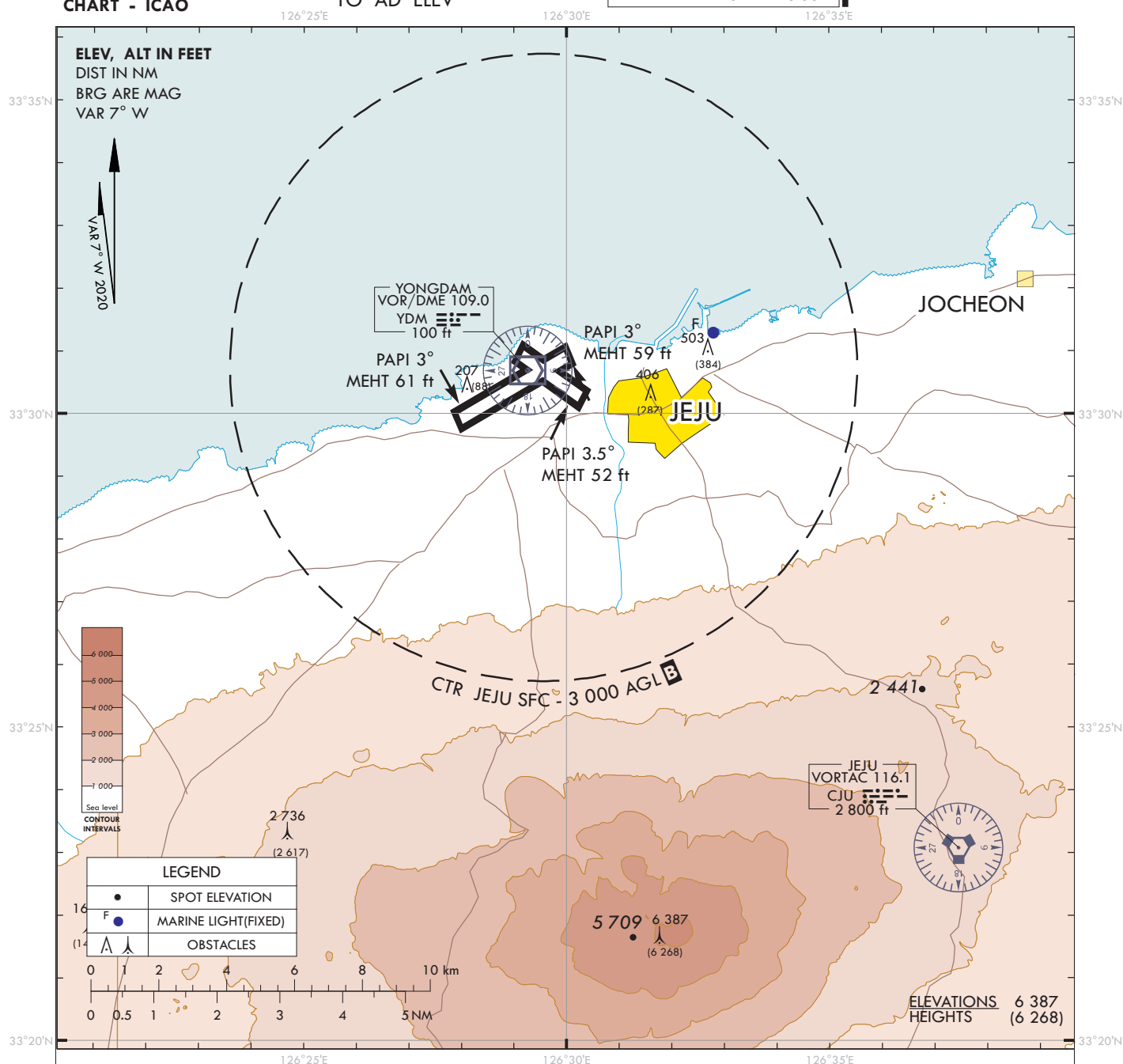


VISUAL  
APPROACH  
CHART - ICAO

AD ELEV 119 ft  
HEIGHTS RELATED  
TO AD ELEV

JEJU APP 121.2 124.05  
DEP 119.225  
TWR 118.2 118.55

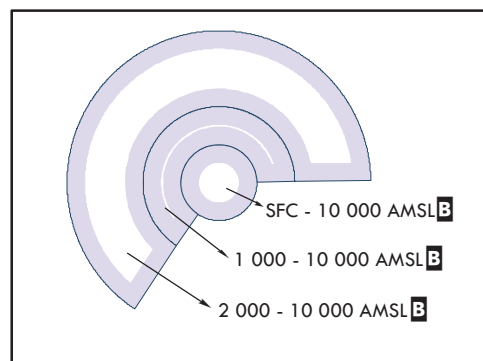
JEJU/Jeju Intl



VISUAL APPROACH PROCEDURE

- Visual approach may be initiated by ATC or approved upon pilot request on traffic permitting basis when :
  - Ceiling : At or above 500 ft plus MVA
  - Visibility : Not less than 3 SM
  - Remark : When conducting visual approach RWY 07, all arriving aircraft shall align the final approach course outside YDM 6 DME for noise abatement.

2. ATS airspace : Class B(Refer to ENR 2.2.-1)



Change : Information of TWR frequency(121.675 MHz → 118.55 MHz).